



## Burglar-resistant roller shutters



version July 2024



Own production



100% tested



High quality



International



Modern design



Easy to assemble



**Metacon-Next is your leading manufacturer of burglar-resistant roller shutters and roller grilles**  
An extensive global network of independent dealers supplies and installs our custom-made quality doors.

The doors are developed by our own Research & Development department on the basis of market wishes and in accordance with the latest requirements. We distinguish ourselves through our large certified product range and work with motivation and ambition to expand this further.

We achieve this by supplying high-quality products, which are easy to assemble, at competitive prices. Personal and good advice on application and substrate is also necessary. We distinguish ourselves in this and enable us - and you as dealer - to offer a suitable solution for every situation and contribute to a safe future.

**Mission**  
Metacon-Next wants people to be able to work and stay **safely**. We offer **security** by minimizing the risks and damage caused by fire and burglary. We do this by offering innovative and high-quality **solutions** by means of burglar-proof and fire-resistant doors. The **sustainability** of our products and processes is central to this. Naturally, our products comply with international laws and regulations. We are a **reliable** partner: a deal is a deal when it comes to delivery times, quality and price.

**Vision**  
**Safety and security** are basic needs. In a world that offers less and less certainty, we see ever-increasing **expectations** and **demands** for safety and security. We are convinced that **continuous innovation** of products and processes is necessary to meet increased expectations and requirements. As a result, we remain the **leading provider** of door solutions and contribute to a safe future.

**Green corporate social responsibility**  
Not only does the green electricity choice help, so do the more than 2.000 solar panels on our roof. This enables us to reduce CO2 emissions to a minimum. This is how we contribute and engage in corporate social responsibility, which is reflected in the successful annual recertification of our ISO 9001 and ISO 14001 certificates.



4	Transparent roller shutters	15	Explanation of terms
6	Insulated roller shutters	16	Notes
8	Roller grilles	18	Matrix
10	Diamond-shaped roller grilles		
12	Steel roller shutters		
14	Declaration of Performance		



From left to right: Klaas Mulder, Cristiano Valsania, Michel Paans, Ashley Stulp, Sander van Winden, Martien Jansen, Bob Vink, Jörg Martin, Jaap Aardema.





TRANS-Q & TRANS-S & TRANS-P

Certification

- CE marked according to EN 13241

Standard

- tubular motor 230 V, suitable for max. 8 movements per day
- dead man's operation
- door leaf made of transparent polycarbonate panels
- panels with thickness 6 mm (type TRANS-Q)
- panels with thickness 5 mm (type TRANS-S)
- panels with thickness 3 mm (type TRANS-P)
- visual transparency 85%
- panel length max. 3.000 mm, connected by aluminum intermediate profiles
- panel height varies according to shutter size

Application

- suitable for indoor/indoor and indoor/outdoor situations
- installation possible on and in the wall / opening

Options include

- indoor/outdoor application up to wind class 3
- burglary resistance class according to RC 3 (type TRANS-Q)
- burglary resistance class according to WK 3 (types TRANS-Q, TRANS-S)
- galvanized steel front cover, top cover, back plate
- galvanized steel parts powder-coated in a RAL color of choice
- door leaf in scratch-resistant quality
- panels in white, opal or 'smoke' finish
- automatic operation using handheld transmitters
- various security devices
- various switches

type	motor	max. width	max. height	max. opening
TRANS-Q	tubular motor	8.000 mm	6.500 mm	± 30 m²
TRANS-S	tubular motor	6.750 mm	6.500 mm	± 37,5 m²
TRANS-P	tubular motor	3.000 mm	3.000 mm	9 m²

Due to continuous product development, please contact us for current dimensions. Larger sizes on request.



## ISO Light

### Certification

- CE marked according to EN 13241

### Application

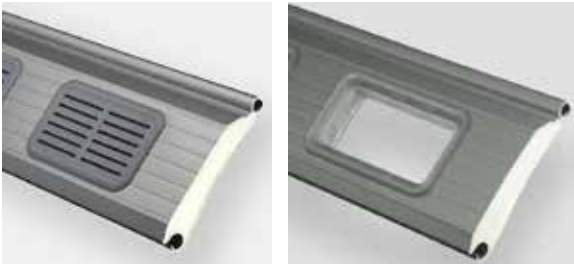
- suitable for indoor/indoor and indoor/outdoor situations
- installation possible on and in the wall / opening

### Standard

- tubular motor 230 V, suitable for max. 8 movements per day
- box motor 400 V motor incl. control box, suitable for max. 25 movements per day
- dead man's operation
- door leaf made of double-walled, insulated, steel spherical slats, thickness 23 mm, height 100 mm
- thermal insulation value (U value) 3,47 W/m K<sup>2</sup>

### Options include

- indoor/outdoor application up to wind class 3
- galvanized steel front cover, top cover, back plate, motor casing
- galvanized steel parts powder-coated in a RAL color of choice
- door leaf in standard RAL colors 3000, 5010, 6009, 7005, 7016, 7044, 8014, 9002, 9006, 9007, 9016
- windows in slats
- ventilation grilles in slats
- automatic operation using handheld transmitters
- various security devices
- various switches



type	motor	max. width	max. height	max. opening
ISO Light	tubular motor	8.000 mm	6.500 mm	± 25 m <sup>2</sup>
ISO Light	box motor	8.000 mm	6.500 mm	52 m <sup>2</sup>

Due to continuous product development, please contact us for current dimensions. Larger sizes on request.





B 96

Certification

- CE marked according to EN 13241

Standard

- tubular motor 230 V, suitable for max. 8 movements per day
- dead man's operation
- door leaf made of galvanized tubular profiles 18x1.5 mm, connected with coupling links
- visual transparency 80%

Application

- suitable for indoor/indoor and indoor/outdoor situations
- installation possible on and in the wall / opening

Options include

- indoor/outdoor application up to wind class 3
- galvanized steel front cover, top cover, back plate
- galvanized steel parts powder-coated in a RAL color of choice
- anti-climbing protection
- automatic operation using handheld transmitters
- various security devices
- various switches

type	motor	max. width	max. height	max. opening
B 96	tubular motor	8.000 mm	6.500 mm	± 32 m²

Due to continuous product development, please contact us for current dimensions. Larger sizes on request.



# Diamond-shaped roller grilles



## RUIT-K

### Certification

- CE marked according to EN 13241

### Standard

- tubular motor 230 V, suitable for max. 8 movements per day
- box motor 400 V motor incl. control box, suitable for max. 200 movements per day
- dead man's operation
- door leaf made of galvanized plated strips in curved diamond shape, 180x134 mm, connected with links
- visual transparency 80%

### Application

- suitable for indoor/indoor and indoor/outdoor situations
- installation possible on and in the wall / opening

### Options include

- indoor/outdoor application up to wind class 2
- galvanized steel front cover, top cover, back plate, motor casing
- galvanized steel parts powder-coated in a RAL color of choice
- version with separate passage door
- anti-climbing protection
- traffic light control
- automatic operation using handheld transmitters
- various security devices
- various switches

type	motor	max. width	max. height	max. opening
RUIT-K	tubular motor	8.000 mm	6.500 mm	± 25 m <sup>2</sup>
RUIT-K	box motor	8.000 mm	6.500 mm	52 m <sup>2</sup>

*Due to continuous product development, please contact us for current dimensions. Larger sizes on request.*



## SD 70 & SD 95 & PERFO 95 & SD 100-D

### Certification

- CE marked according to EN 13241

### Application

- suitable for indoor/indoor and indoor/outdoor situations
- installation possible on and in the wall / opening

### Standard

- tubular motor 230 V, suitable for max. 8 movements per day
- box motor 400 V motor incl. control box, suitable for max. 25 movements per day
- dead man's operation
- door leaf made of single-walled spherical slats, thickness 0,9 mm, height 70 mm or 95 mm (types SD 70, SD 95, PERFO 95)
- double-walled flat slats, thickness 22 mm, height 100 mm (type SD 100-D)

### Options include

- indoor/outdoor application up to wind class 5
- contra-coiling (type SD 70)
- punched slats (type SD 95)
- perforated slats, visual transparency 70% (type PERFO 95)
- burglary resistance class according to WK 3 (types SD 70, SD 95, PERFO 95)
- galvanized steel front cover, top cover, back plate, motor casing
- galvanized steel parts powder-coated in a RAL color of choice
- automatic operation using handheld transmitters
- various security devices
- various switches

type	motor	max. width	max. height	max. opening
SD 70	tubular motor	4.500 mm	5.000 mm	22,5 m <sup>2</sup>
SD 95	tubular motor	8.000 mm	6.500 mm	± 25 m <sup>2</sup>
SD 95	box motor	8.000 mm	6.500 mm	± 30 m <sup>2</sup>
PERFO 95	tubular motor	8.000 mm	5.000 mm	± 30 m <sup>2</sup>
SD 100-D	tubular motor	5.000 mm	5.000 mm	± 12,5 m <sup>2</sup>
SD 100-D	box motor	8.000 mm	6.500 mm	52 m <sup>2</sup>

*Due to continuous product development, please contact us for current dimensions. Larger sizes on request.*



# Declaration of Performance (DoP)

The Declaration of Performance (DoP) is a mandatory, door-specific, supplier's declaration in which the performance of the produced door is declared.

As a dealer of Metacon-Next, we always guarantee you a correct DoP!

Draft Declaration of Performance

No. .... - ....

Metacon-Next

1

Unique identification code of the product type:

.....

2

Type, batch or serial number or any other element for the identification of the product

Order no.: .....  
Pos.: ..

3

Intended use of the construction

Industrial roller shutter

4

Name and address of manufacturer

Metacon-Next B.V.  
Zuidbaan 450  
2841 MD Moordrecht (NL)

5

Name of representative

M. Asscheman

6

System of assessment and verification of constancy of performance of the construction product as set out in annex V

System 3

7

In case of the Declaration of Performance concerning a construction product covered by a harmonized standard EN 13241  
The notified product verification body (n° ....) has performed in system 3 and issued the test report (certificate n° ???/???-??)

8

Declared performance

Essential characteristics	Performance	Harmonized Standard
Water tightness	NPD	EN 13241:2003 + A2:2016
Release of dangerous substances	NPD	
Resistance to wind load *	Class 0 – 5	
Thermal resistance	NPD	
Air permeability	NPD	
Safe opening (for vertically moving doors)	Pass	
Definition of geometry of glass components	NPD	
Mechanical resistance and stability	Pass	
Operating forces (for power operated doors)	Pass	
Durability of water tightness, thermal resistance and air permeability against degradation	NPD	

9

The performance of the product according to 1 and 2 corresponds to declared performance according to 8.  
The manufacturer according to 4 alone is responsible for the creation of this declared performance.  
Performances marked with \* are depending on the purchased configuration; the final DoP will be send with the delivery of the order.

## Quality standards

All our products have been tested, classified and marked according to the most recent regulations within the European Union.



# Explanation of terms

## General

CE	Conformité Européene
DoP	Declaration of Performance
EN 13241	European Norm of product standard for industrial doors

## Burglary resistance

NEN 5096	Dutch norm for burglary resistance
EN 1627 t/m 1630	European Norm burglar resistance
WK	Resistance Class (NL)
RC	Resistance Class (EU)

MANUAL TESTS - ATTEMPTED FORCED ENTRY (EN 1630)							
class	burglar	static tests (EN 1628)	static tests (EN 1629)	tool set	illustration of some tools	contact duration	total test duration
RC1	occasional	300 kg	50 kg 450 mm	small simple tools, physical force		-	-
RC2	occasional	300 kg	50 kg 450 mm	above + simple tools (screwdriver, pliers, wood/plastic wedges, saws)		3 min	15 min
RC3	moderate	600 kg	50 kg 750 mm	above + additional screwdrivers, crowbar, small hammer, hand drill, drift pin		5 min	20 min
RC4	experienced	1000 kg	-	above + heavy hammer, axe, wood chisel, metal chisel, bolt-cutter, hand chisel and portable drill		10 min	30 min
RC5	experienced	1500 kg	-	above + electric tools (drill, portable jigsaw, sabre saw, angle grinder)		15 min	40 min
RC6	experienced	1500 kg	-	above + sledgehammer, steel wedge, powerful electric tools (grinder, impact hammer)		20 min	50 min

## Wind pressure load

wind class	wind pressure in Pascal (Pa)	wind speed in km/h	wind force in Beaufort
0	0	0	0
2	< 450	89 – 102	10
3	< 700	103 – 117	11
4	< 1.000	> 117	12
5	< 1.200	> 117	12



[illegible]

## Fire rated doors

In addition to the extensive range of burglary-resistant products, Metacon-Next is also a manufacturer and supplier of fire rated doors.

If you are interested in fire rated doors, visit our website and download the brochure.



	CE	classification burglary resistance according NEN 5096			classificatie burglary resistance EN 1627-1630			field of application			field of application			max. recommend cycles per day		wind pressure load performance					
	EN 13241	WK			RC			230 V tubular motor based on total measures			400 V tubular motor based on total measures			based on motor type		based on wind class					
		2	3	4	2	3	4	width	hoogte	opening	width	hoogte	opening	tubular motor	box motor	0	1	2	3	4	5
Transparent roller shutters																					
TRANS-Q	✓	✓ <sup>1</sup>	✓ <sup>1</sup>	-	✓ <sup>3</sup>	✓ <sup>3</sup>	-	8.000 mm	6.500 mm	± 30 m²	-	-	-	8	-	✓	✓	✓ <sup>5</sup>	-	-	-
TRANS-S	✓	✓ <sup>2</sup>	✓ <sup>2</sup>	-	-	-	-	6.750 mm	6.500 mm	± 37,5 m²	-	-	-	8	-	✓	✓	✓ <sup>6</sup>	✓ <sup>6</sup>	-	-
TRANS-P	✓	-	-	-	-	-	-	3.000 mm	3.000 mm	9 m²	-	-	-	5	-	✓	-	-	-	-	-
Insulated roller shutters																					
ISO Light	✓	-	-	-	-	-	-	8.000 mm	6.500 mm	± 25 m²	8.000 mm	6.500 mm	52 m²	8	25	✓	✓	✓ <sup>7</sup>	✓ <sup>7</sup>	-	-
Roller grilles																					
B 96	✓	-	-	-	-	-	-	8.000 mm	6.500 mm	± 32 m²	-	-	-	8	-	✓	✓	✓	✓	-	-
Diamond-shaped roller grilles																					
RUIT-K	✓	-	-	-	-	-	-	8.000 mm	6.500 mm	± 25 m²	8.000 mm	6.500 mm	52 m²	8	200 <sup>4</sup>	✓	✓	✓	-	-	-
Steel roller shutters																					
SD 70	✓	✓	✓	-	-	-	-	4.500 mm	5.000 mm	22,5 m²	-	-	-	8	-	✓	✓	✓	✓	✓	✓
SD 95	✓	✓	✓	-	-	-	-	8.000 mm	6.500 mm	± 25 m²	8.000 mm	6.500 mm	± 30 m²	8	25	✓	✓	✓	✓	✓	✓
PERFO 95	✓	✓	✓	-	-	-	-	8.000 mm	5.000 mm	± 30 m²	-	-	-	8	-	✓	✓	✓ <sup>5</sup>	-	-	-
SD 100-D	✓	-	-	-	-	-	-	5.000 mm	5.000 mm	± 12,5 m²	8.000 mm	6.500 mm	52 m²	8	25	✓	✓	✓	✓	✓	✓

1. till total width 6.420 mm

2. till total width 4.270 mm

3. till total measures 3.300 mm x 3.900 mm (w x h)

4. note: in combination with motor operating time of 60%

5. till total width 5.000 mm

6. till total width 4.000 mm

7. till total width 6.000 mm





📍 Randweg 19, 8304 AS, Emmeloord  
☎ +31(0) 182 - 23 15 16



📍 Zuidbaan 450, 2841 MD, Moordrecht  
☎ +31(0) 182 - 23 15 15

📍 MetacoN-Next GmbH (Billerbeck)  
☎ +49 173 - 905 89 08  
✉ j.martin@metacon-next.eu



📍 MetacoN-Next Italia (Turin)  
☎ +39 342 - 187 05 88  
✉ cristiano@metacon-next.com

